

CERTIFICATE OF LOCATION OF GOVERNMENT CORNER

EAST QUARTER Corner of Section 14, Township 107, Range 39, 5TH P.M.

STATE OF MINNESOTA, County of MURRAY

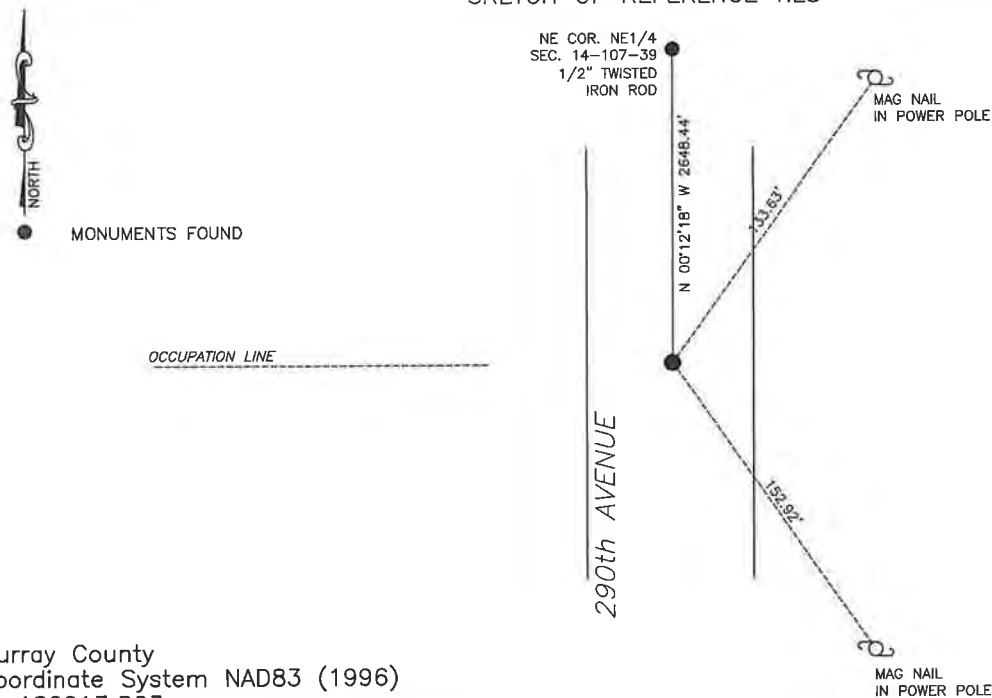
At the corner location shown on the sketch:

☒ On 4/3/2025 found a 3/4" pipe
DATE

☒ left monument as found, ☐ lowered monument, ☐ removed monument (explain)

☐ On _____ placed a _____
DATE

SKETCH OF REFERENCE TIES



Murray County
Coordinate System NAD83 (1996)
N: 182013.803
E: 574705.520

WGS84
LAT: 44°04'21.5956"
LON: -95°28'56.7942"

Statement of evidence relative to this corner location is on back of page.

I hereby certify that this document and the data contained herein was prepared by me or under my direct supervision.

Daniel L. Bueltel
Daniel L. Bueltel
License No. 43844

6/19/2025
DATE

JUN 27 2025

Karen Brown

MURRAY COUNTY RECORDER

Statement of Evidence

EAST QUARTER CORNER SECTION 14, T107N, R39W OF THE 5th P.M.

In July of 1861, J.W. Myers surveyed the township lines.

In September of 1861, L. Brockmann subdivided the township.

A survey by M.E. Koopman dated 1954 notes an iron stake in the center of grade for the corner.

County records dated April 17, 1992 show an old spike located 8" below grade and placed a $\frac{3}{4}$ "x24" iron pin.

On August 27, 2020 Westwood Professional Services located $\frac{3}{4}$ " iron pipe at the corner.

On April 3, 2025 Bueltel-Moseng Land Surveying found a $\frac{3}{4}$ " iron pipe at the corner.